

Model C707 Exploded View

4

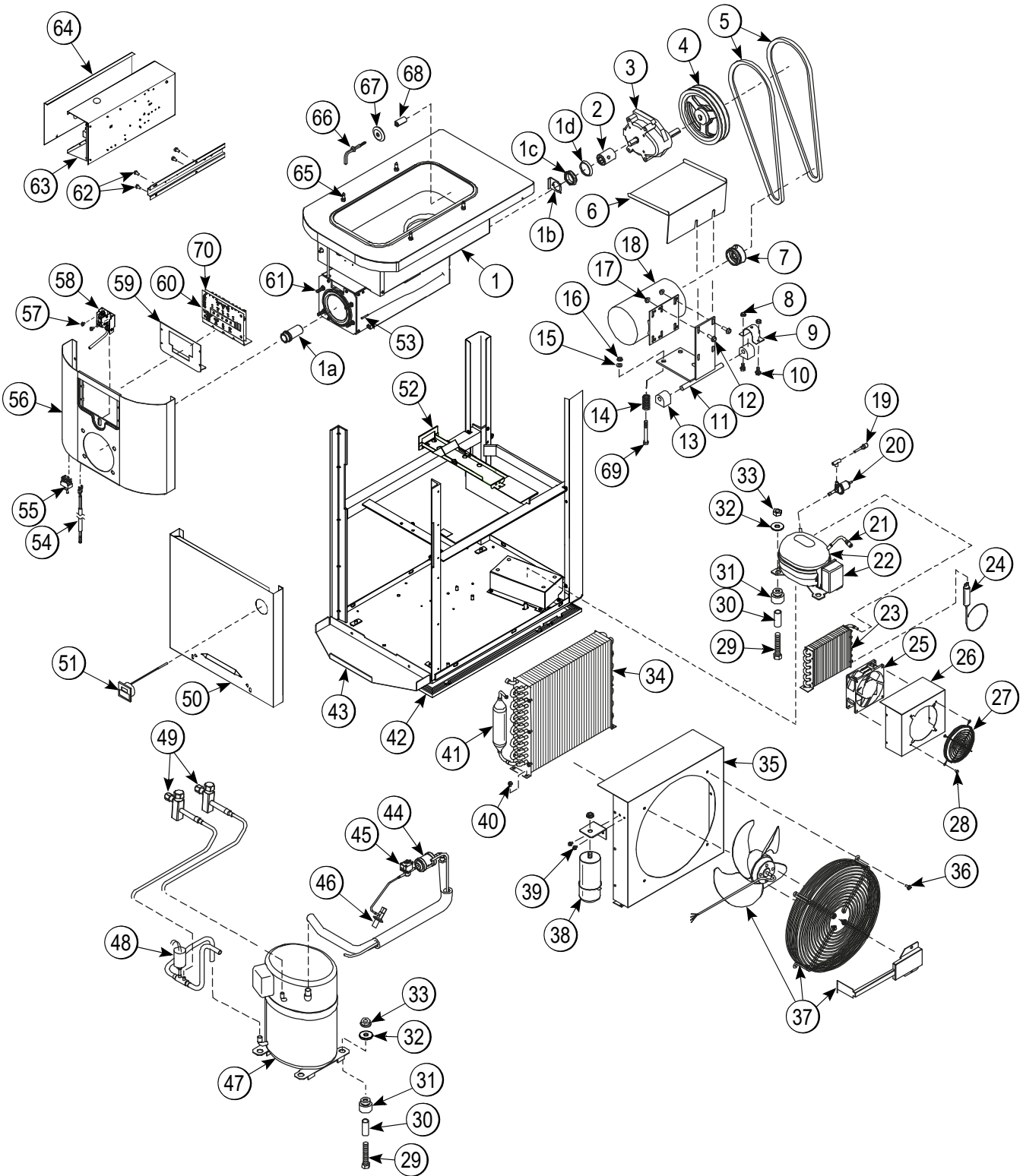


Figure 4-3

Model C707 Parts Identification

Item	Description	Part No.
1	Shell A.-Insulated	X64133-SER
1a	Bearing-Rear Shell	031324
1b	Washer-Bearing Lock	012864
1c	Nut-Bearing	028991
1d	Guide-Drip Seal	028992
2	Coupling-Drive 3/4 Hex	012721
3	Gear A.*Reducer 4.21:1	021286-SER
4	Pulley-2AK74-5/8	027822
5	Belt-AX41	023876
6	Shield-Beater Motor	051371
7	Pulley-2AK22 X.625-.6265	016403
8	Nut-1/4-20 Flange Lock	017523
9	Clamp-Mounting	012257
10	Screw-1/4-20X1/2 Hex	048083
11	Hinge A.-Motor	X25796
12	Screw-5/16-18X7/8 SERR.	017973
13	Bushing-Rubber Mount	012258
14	Spring-COMP.970X.115X2.00	025707
15	Grommet-7/16 X 5/16	016212
16	Cap-Rubber Mount	011844
17	Nut-5/16-18 Flange Nut	017327
18	Motor-1.5 HP Caps	021522-27
19	Valve-Access-1/4FL X 1/4	044404
20	Valve-EPR 1/4S	022665
21	Valve-Access-1/4 MFLX1/4	047016
22	Kit A.-Compressor	X55187SER2
23	Condenser-AC 7X6X1.25	027155
24	Dryer-Cap. Tube .021 ID X 9	055522
25	Motor-Fan 95.3 CFM 2700	062253-27
26	Shroud-Danfoss	027386
27	Guard-Fan	028534-1
28	Screw-10-32X3/8 UNSL	039381
29	Screw-5/16-18X1-1/2 Hex	001894
30	Sleeve-Mounting-Comp.	039924
31	Grommet-Compressor	037428
32	Washer-5/16 USS Flat CR3	000651

Item	Description	Part No.
33	Nut-5/16-18 Flange Nut	017327
34	Condenser-AC 15LX14H	046558
35	Shroud A.-Cond.	X64127
36	Screw-10-32X1/2 SERR.	020982
37	Motor-Fan 80W	064003-27
38	Capacitor-Run 2UF 450	064004
39	Screw-8 X1/4 SLTD Hex	009894
40	Screw-10-32X1/2 SERR.	020982
41	Accumulator-Copper 2"DI	047062
42	Gasket-Base Pan	056058
43	Shelf-Tray-Drip	056076
44	Dryer-Filter-HP62-3/8	048901
45	Valve-Solenoid 7/64ORF X 1/4S (Also Available 043449-1 Kit-Valve Repair)	043449-27
46	Valve-Exp-Auto-1/4S X1/4	046365
47	Compressor L64A113BBCA	048259-27E
48	Switch-Pressure 440 PSI	048230
49	Valve-Access-1/4MFL X 3/8	053565
50	Panel-Front-Lower	058942
51	Thermometer-Digital	056239
52	Guide A.-Drip Pan	X28863
53	Switch-Reed*Door	056771
54	Jack A.-Flavorburst	X56353
55	Switch-Toggle-DPDT*VDE	054809
56	Panel A.-Front-Upper	X58950
57	Screw-4-40X1-1/4 RD HD	033138
58	Switch A.-Draw	X56147
59	Plate A.-DEC	X56081
60	Board-Logic-Gen 2.11	X69571SER2
61	Stud-Nose Cone	055987
62	Screw-10X3/8 Slotted	015582
63	Control A. *Bristol	X63854SER2
64	Cover-Control Box	066721-SP1
65	Pin-Retaining-Hopper	043934
66	Probe A.-Mix *Square	X30922
67	Disc-Probe *SQ Hole	030965
68	Spacer-Probe *SQ Hole	030966
69	Screw-5/16-18X3 Hex Head	009497
70	Switch-Membrane-5 Pos	043217

Model C707 Panel Identification

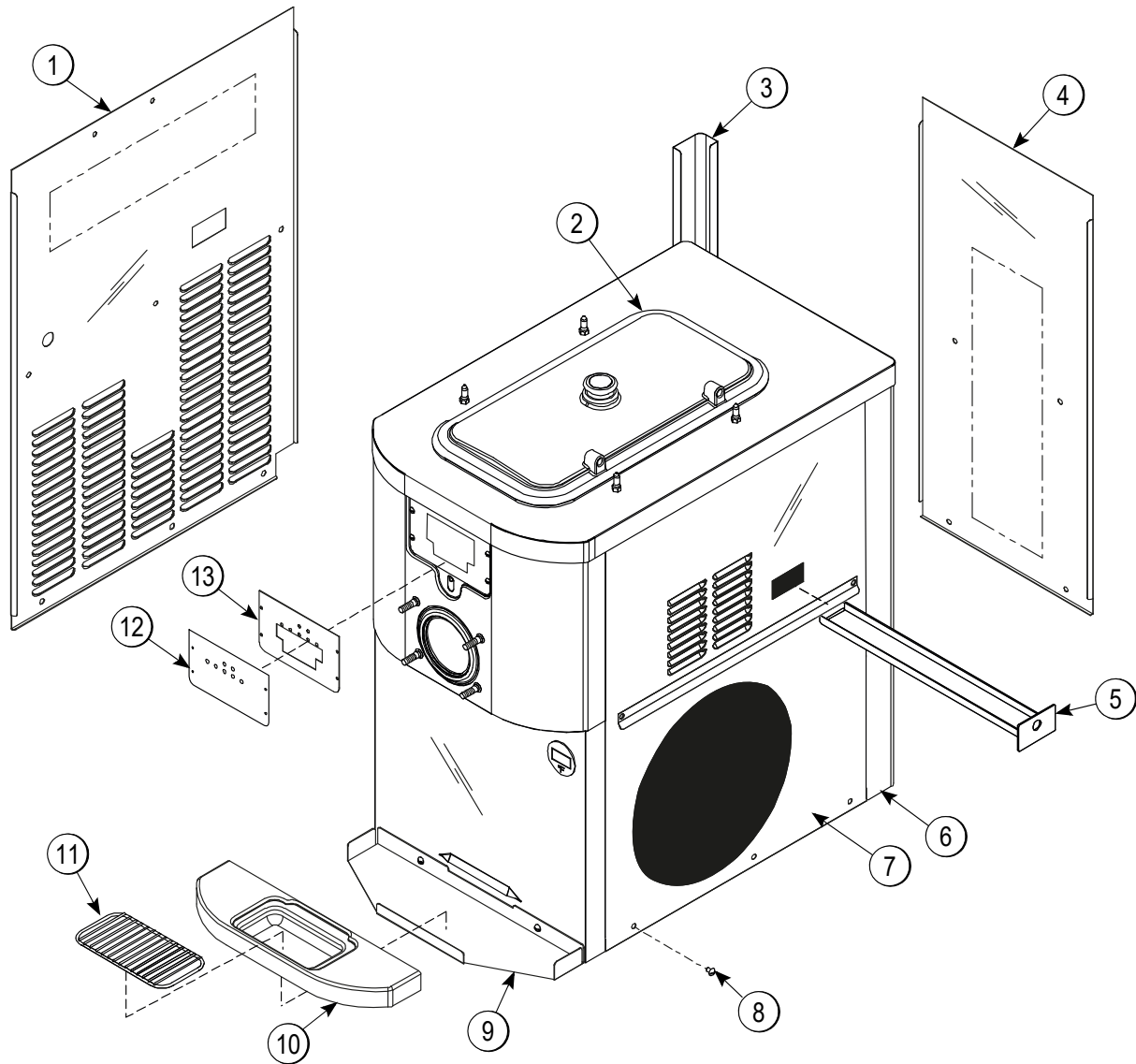


Figure 4-4

Item	Description	Part No.
1	Panel-Side-Left	066722-SP3
2	Kit A.-Cover-Hopper*Blk	X65368-SP
3	Trim-Corner-Rear-Left	056964
4	Panel-Rear	056077-SP1
5	Pan-dRip 11-5/8 Long	027503
6	Trim-Corner-Rear-Right	056965
7	Panel A.-Side-Right	X64151

Item	Description	Part No.
8	Screw-1/4-20X3/8 SLTD	011694
9	Shelf-Tray-Drip	056076
10	Tray-Drip	056858
11	Shield-Splash	049203
12	Decal-DEC-Taylor	057312
13	Plate-DEC	057034

Control A.—X63854-27 (Model C707 Bristol)

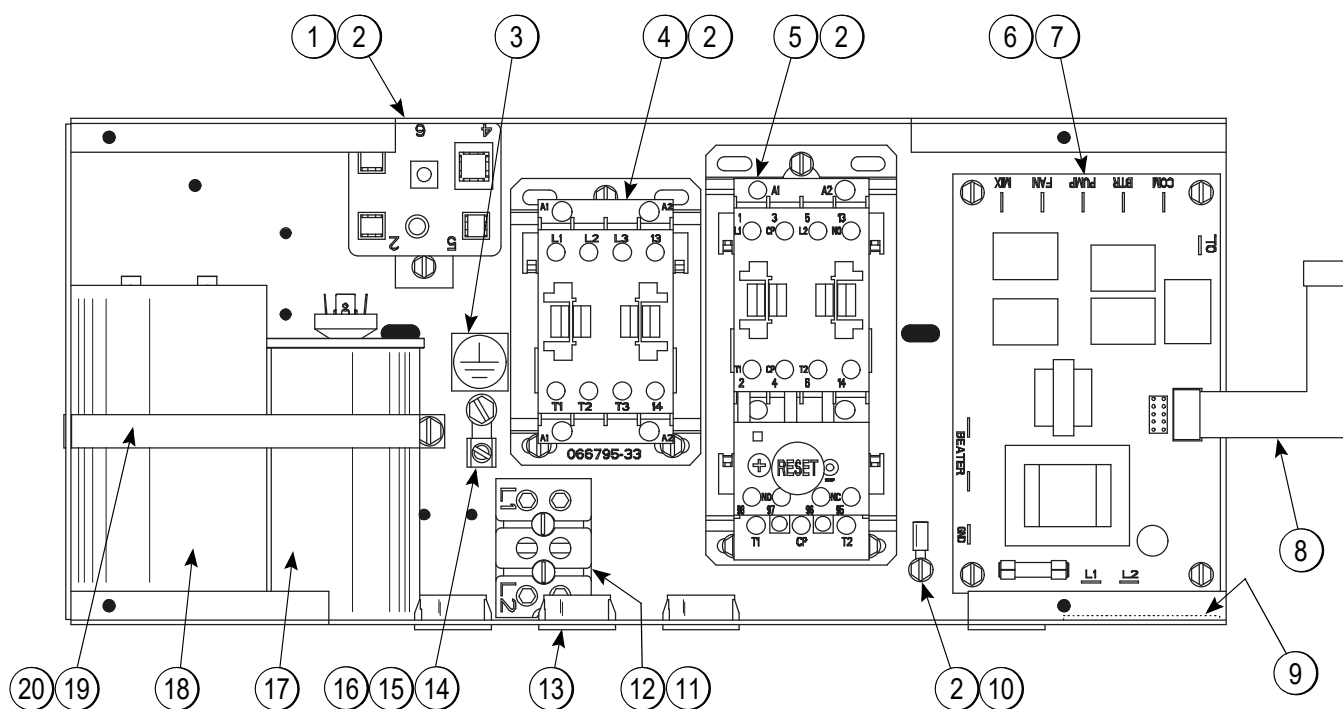


Figure 4-7

Item	Description	Part No.
1	Relay-Start-Compressor	062363
2	Screw-8X1/4 SLTD Hex Washer	009894
3	Label-Protective Earth Ground	017669
4	Relay-3 Pole-20 A-208/240	066795-33
5	Starter-1 PH 6.3 to 10 A	066794-27K
6	Board-Power-Gen 1 & 2	X69574-SER
7	Screw-6-32X5/8 UNSLTD	041363
8	Cable-Ribbon-PWR/RLY	069558-60
9	Label-Copper Cond Only-Roman	025948
10	Terminal-Ring #8 18-22 Wire	090706

Item	Description	Part No.
11	Block-Terminal 2p L1,L2	039422
12	Screw-8X 1 1/4 PHLP HD RD	039420
13	Bushing-Snap 11/16 ID X 7/8	010548
14	Screw-10-32X1/2 Serrated	020982
15	Nut-10-32 WHIZ Flange Locknut	020983
16	Lug-Grounding 260 W/GR. Screw	020928
17	Capacitor-Run 25UF/440V	037431
18	Capacitor-Start 189-227UF/33	033044-1
19	Strap-Capacitor 7-11/32	037890
20	Screw-10X3/8 Slotted Hex	015582

Switch A. Draw—X56147 (Models C706 and C707)

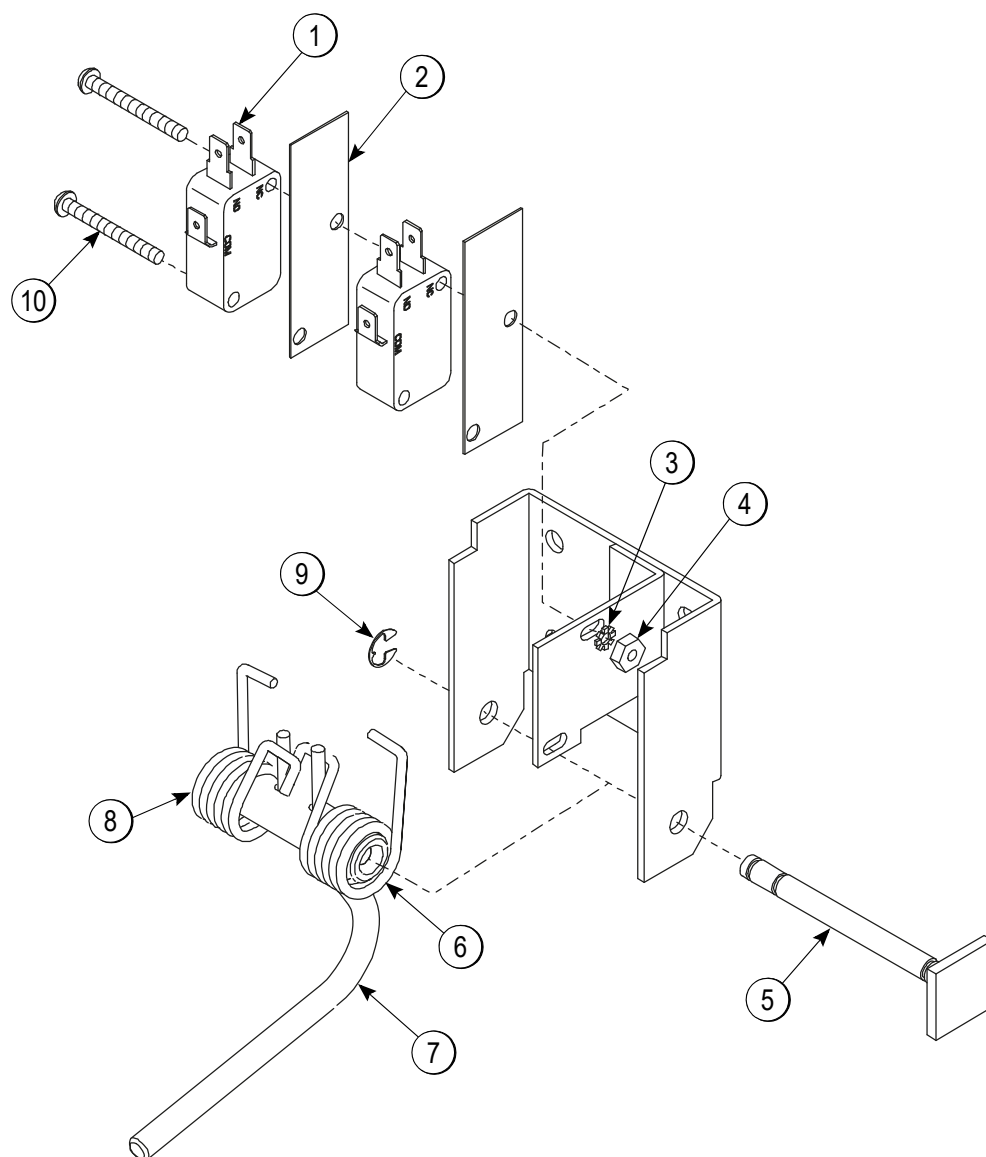


Figure 4-9

Item	Description	Part No.
1	Switch-Lever-SPDT-10A-125	028889
2	Insulator-Switch-SPDT-10A -125-25	029099
3	Washer-#4 External Tooth Lock	043075
4	Nut-4-40 Nylon Lock Zinc/TRI	058407
5	Pin-Pivot	015478

Item	Description	Part No.
6	Spring-Return-Left	041660
7	Arm A.-Draw	X56253
8	Spring-Return-Right	041661
9	E-ring 3/16 .335 O.D.	049178
10	Screw-4-40X1-1/4 RD HD ZP (CR3)	033138

Door and Beater Assembly (Model C707)

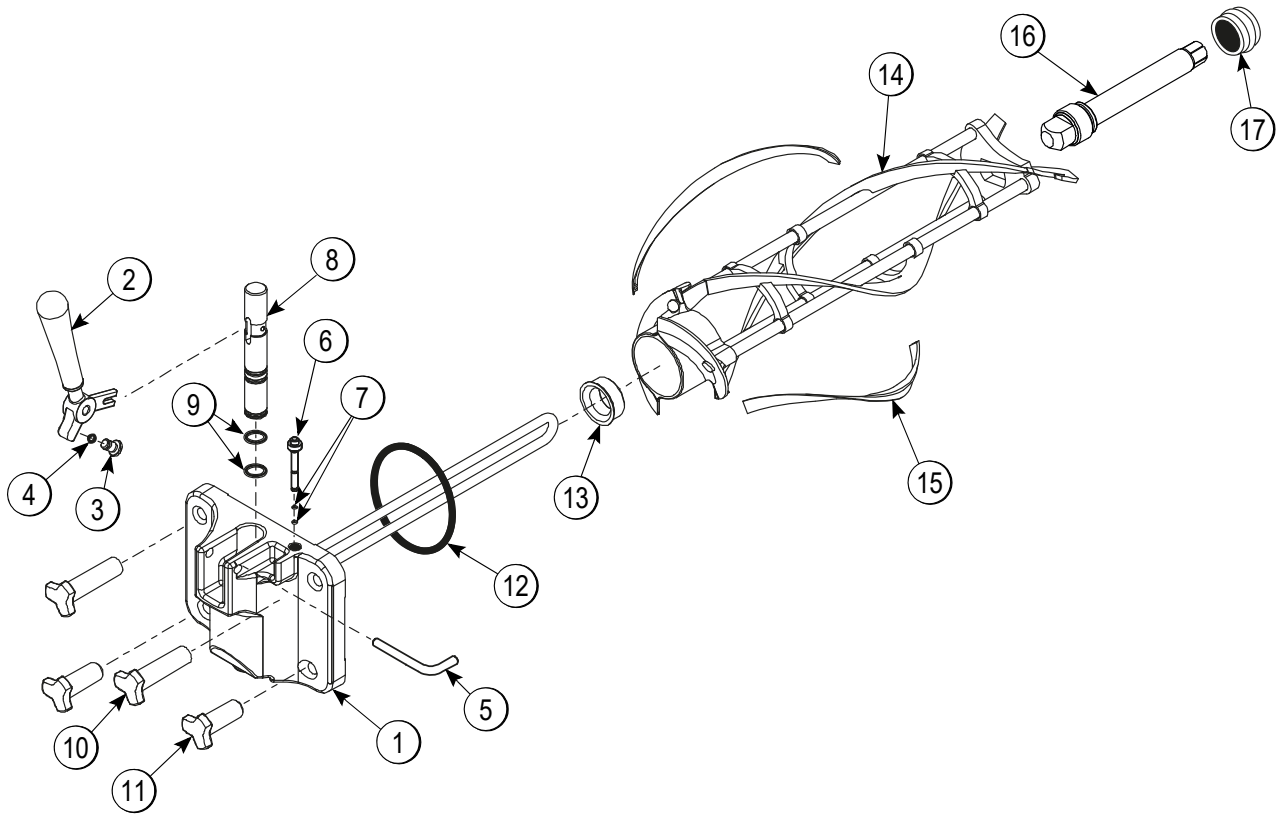


Figure 4-12

Item	Description	Part No.
1	Door A.-w/Baffle	X56071-SER
2	Handle A.-Draw-Welded	X56246
3	Screw-Adjustment-5/16-24	056332
4	O-ring-1/4 OD x 0.070W 50	015872
5	Pin-Handle-SS	055819
6	Plug-Prime	028805
7	O-ring-3/8 OD x 0.070W	016137
8	Valve A.-Draw	X56072
9	O-ring-7/8 OD x 0.103W	014402

Item	Description	Part No.
10	Nut-Stud-Long	058765
11	Nut-Stud	058764
12	Gasket-Door HT 4"-DBL	048926
13	Bearing-Front	050216
14	Beater A.-3.4 qt	X31761
15	Blade-Scraper-Plastic	035174
16	Shaft-Beater	056078
17	Seal-Driveshaft	032560

C707 Operator Parts

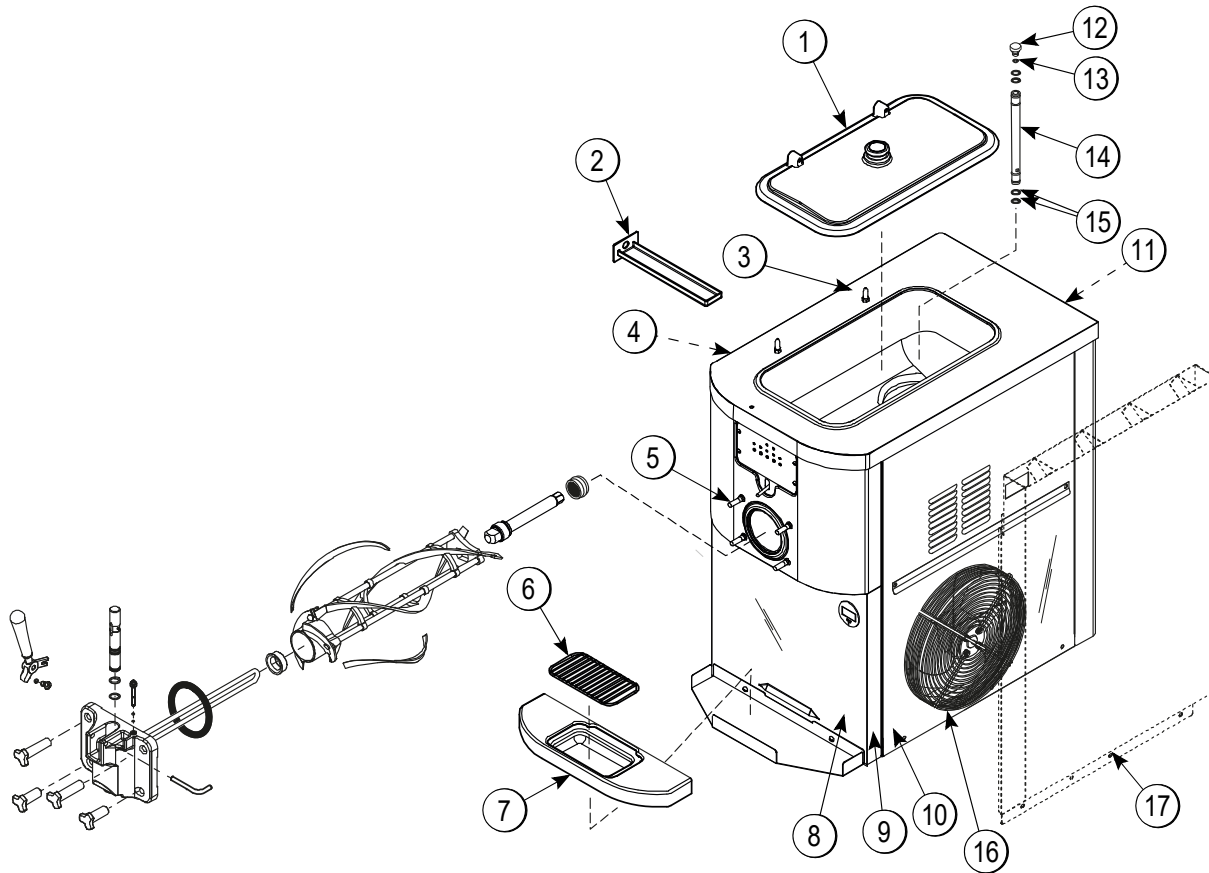


Figure 4-14

Item	Description	Part No.
1	Cover-Hopper-Black	053809-1
2	Pan-Drip 11-5/8 Long	027503
3	Pin-Retaining-Hopper CVR	043934
4	Panel-Side-Left	066722-SP3
5	Stud-Nose Cone	055987
6	Shield-Splash	049203
7	Tray-Drip	056858
8	Panel-Front-Lower	058942
9	Panel A.-Front Upper	X58950

Item	Description	Part No.
10	Panel A.-Side-Right (Std. Machine Only, Not Top Air Discharge)	X64151
11	Panel-Rear	056077-SP1
12	Orifice	022465-100
13	O-ring-3/8 OD x 0.070W	016137
14	Tube A.-Feed	X29429-2
15	O-ring-0.643 OD x 0.077W	018572
16	Guard-Fan	028534-1
17	Panel A.-Side Right (Top Air Discharge Machines, Only)	X65441-SER